

WGM MONTAGE INSTRUCTIONS

Read over the entire instructions prior to installation. Your vinyl decal comes in 3 layers, The top layer is the translucent transfer tape, the bottom layer is the white backing and sandwiched in between these layers is the decal itself.

You will need:



-Clean cloth



-Painter's tape



-Scissors



-Squeegee (or credit card)

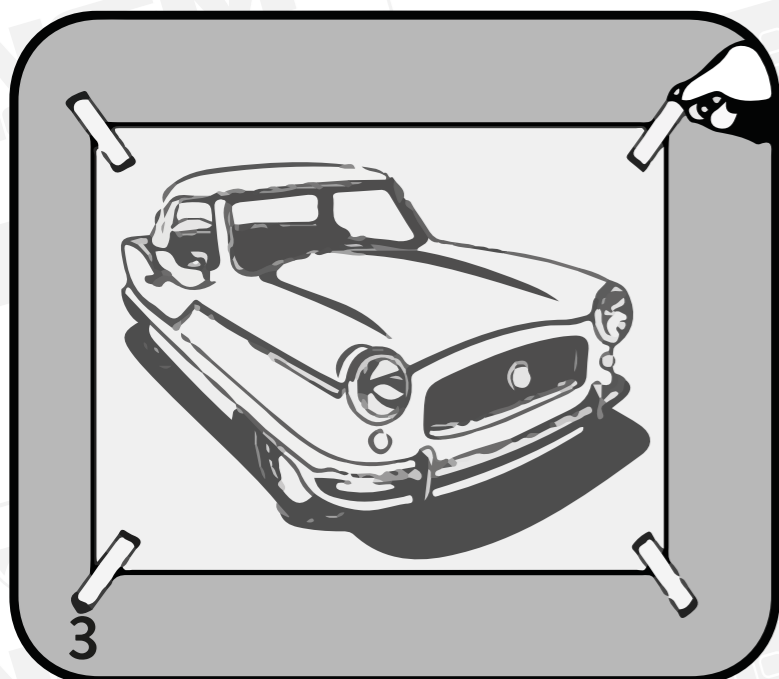
*Should you decide to remove the vinyl decal, use a hair dryer on HOT setting and heat up the area before peeling. This will weaken bond of the adhesive.



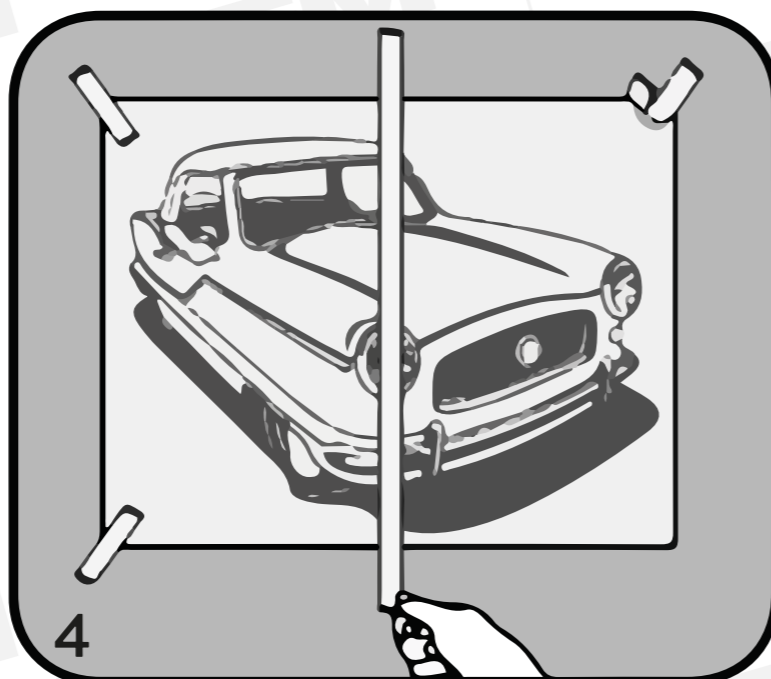
1 Clean the surface with a dry cloth. It is important to make sure its now free of dust, dirt, and moisture.



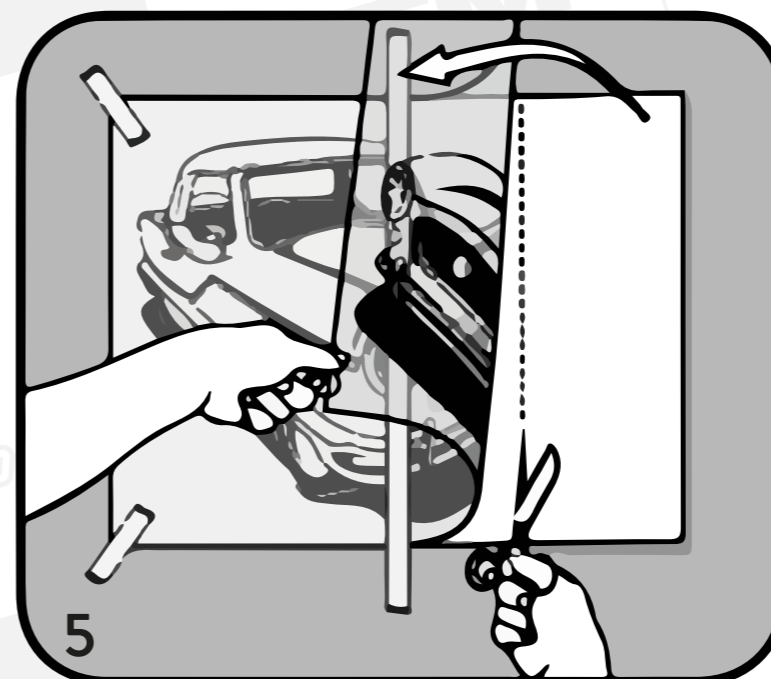
2 Lay the decal on a flat surface such as a table. Use a squeegee, credit card or plastic spatula and rub firmly across the surface of the graphic to remove any bubbles and to strenghten the bond between the tranfer tape and graphic.



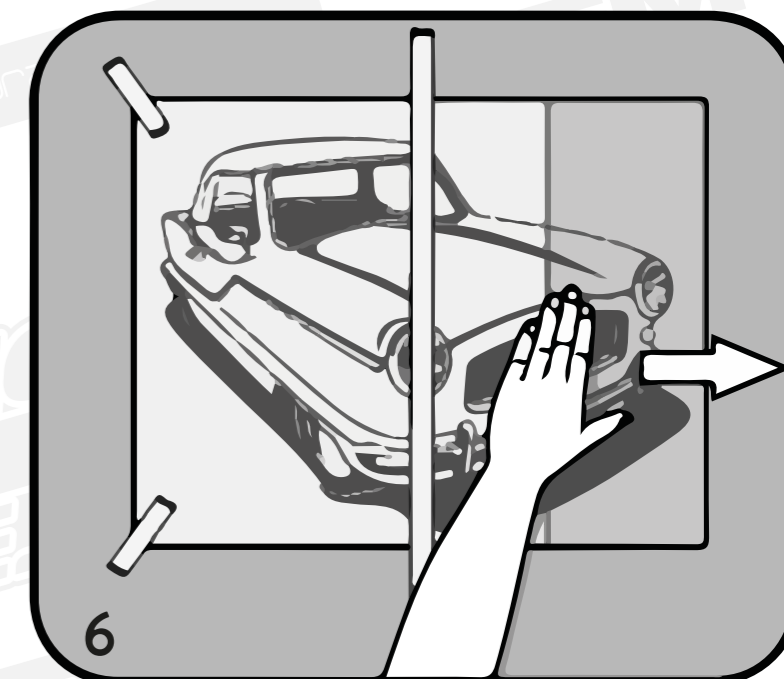
3 Ensuring you have the decal in the position you want it on the wall, tape the corners of the decal to the wall with painter's tape.



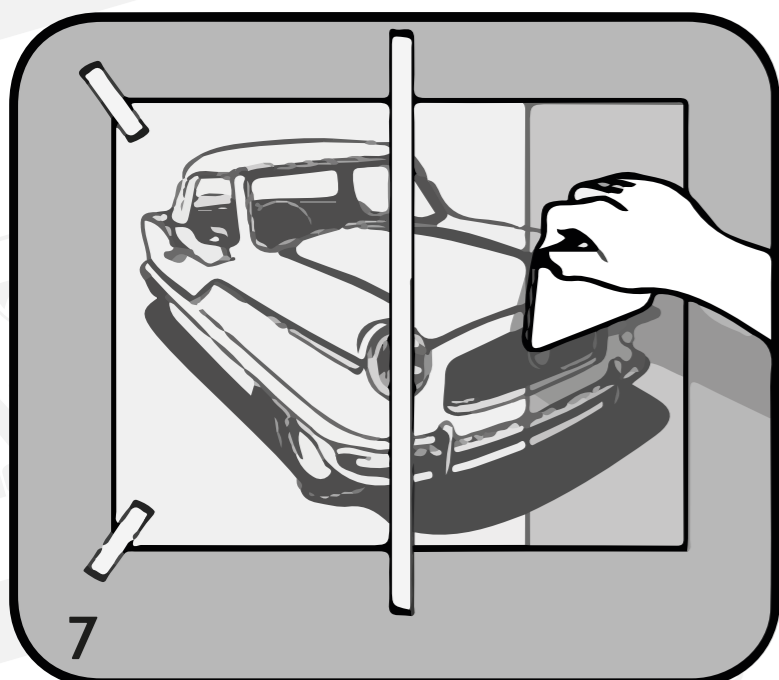
4 Tape the decal to the wall with a strip of painter's tape across the middle then remove the tape pieces from the corners of one side.



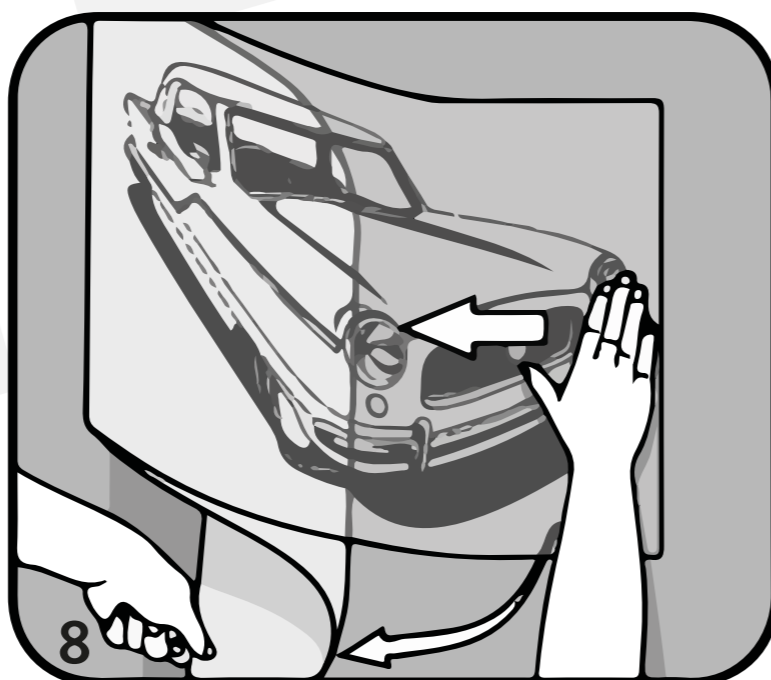
5 Peel back one side of teh transfer tape from the white backing, ensuring that the decal sticks to the transfer tape. Using scissors, cut away the side of the white backing paper that is revealed.



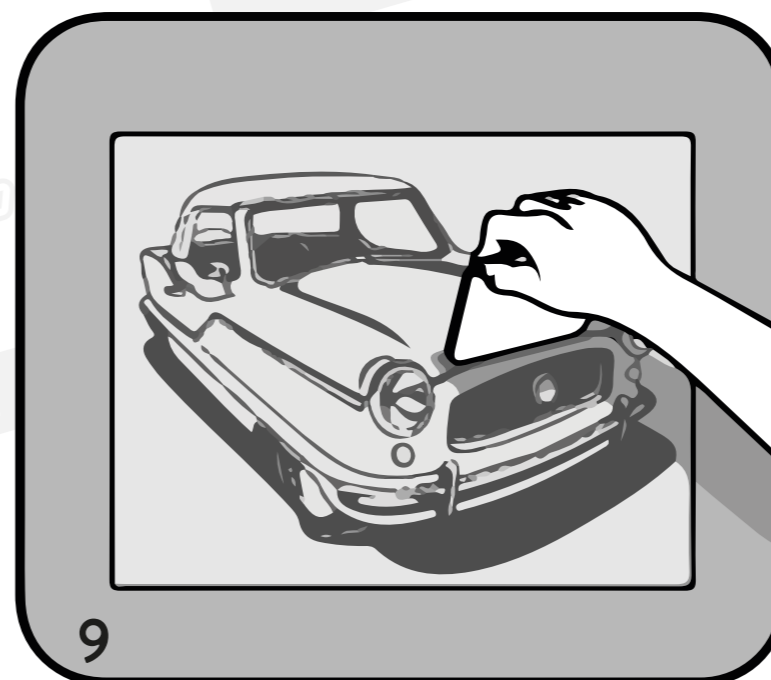
6 Working from the middle of the image then outward to the edges, use your hand to smooth the side of the transfer tape so it adheres to the surface. Be sure to avoid bubbles and wrinkles.



7 Use the squeegee to firmly rub across the side of the vinyl graphic. This will remove any air bubbles and help the adhesion of the vinyl decal with the surface.



8 Remove the strip of painter's tape. Pull there maining white backing paper from the back of the decal and smooth the decal down with your hand as yu go. Avoid bubbles and wrinkles.



9 Use the squeegee to firmly rub the across the entire vinyl graphic.



10 Starting with a corner anf working diagonally, carefull pull the transfer tape from the surface of the wall and vinyl decal, ensuring that all parts of the decal adhere to the wall.